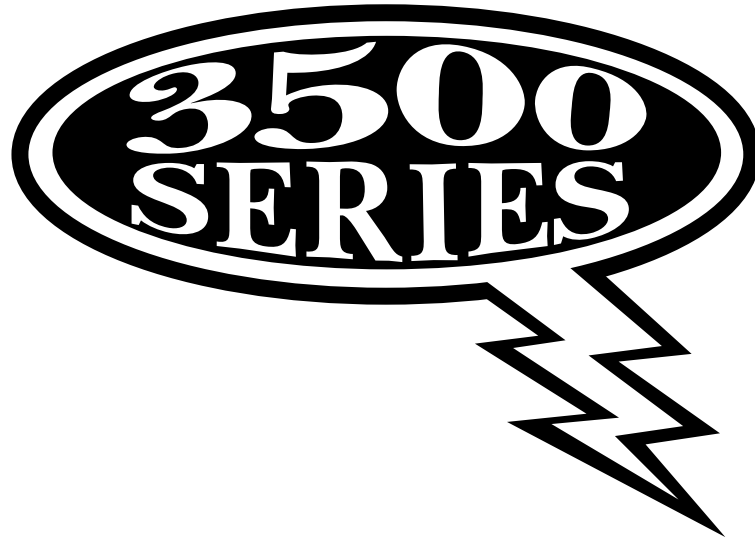




ENGINEERED TARPING SOLUTIONS

P/N 1118023 Rev. B



3500 Series Electric Upper Flex Arm Retro-Fit Instructions

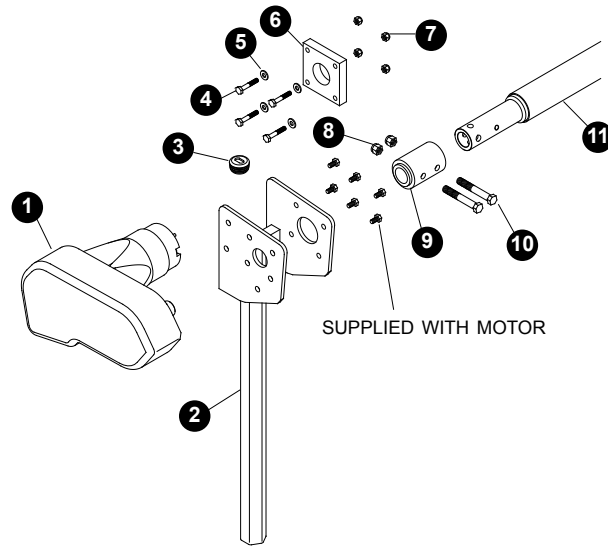
Retro-Fit Kit to be used only on 3500 Systems
that have already been installed

READ BEFORE INSTALLING

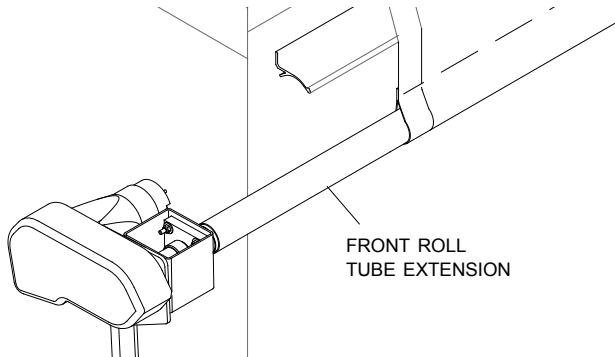
PO BOX 713 ■ 2309 SHUR-LOK STREET ■ YANKTON, SD 57078-0713
PHONE 1-800-4-SHUR-LOK (1-800-474-8756) ■ FAX 605-665-0501
www.shurco.com

SHOP ONLINE: www.shopshurco.com

Item	Part No.	Part Name
	1118024	Upper Flex Arm 3500 Retrofit Kit
1.	1703135	Heavy Duty Motor
2.	1118015	Upper Flex Arm - Motor Side
3.	1703882	Cap Plug w/Hole - 1 1/4"
4.	1700377	Cap Screw - 1/4" x 1 1/2"
5.	1700427	Flat Washer - 1/4"
6.	1110408	Flange Bearing
7.	1701543	Nylon Lock Nut - 1/4"
8.	1701580	Nylon Lock Nut - 3/8"
9.	1118020	Coupler, Motor Shaft/Roll Tube
10.	1704267	Cap Screw - 3/8" x 2 3/4"
11.	1110400	Roll Tube Ext. w/Drive Shaft
	1117497	Roll Tube Ext. w/Drive Shaft - Sloped

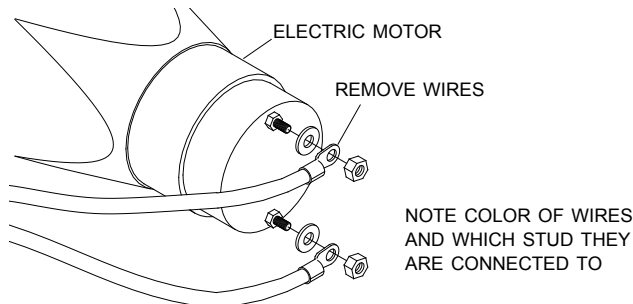


STEP 1: Roll tarp closed and let roll tube hang loosely below latchplate.

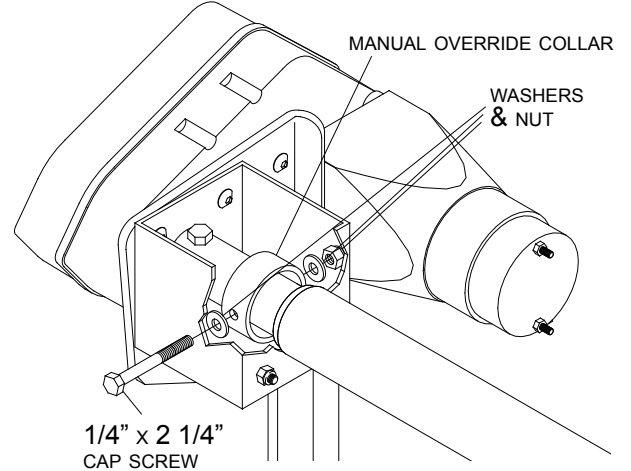


WARNING
 Flex arms are under tension while torsion springs are engaged. Use caution while assembling and disassembling arms. Failure to read and follow instructions could result in serious injury or death.

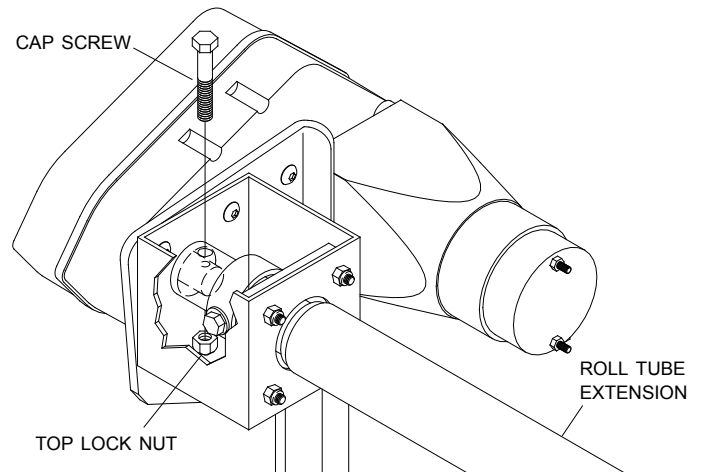
STEP 2: Shut off or disconnect power source. Remove electric wiring from motor.



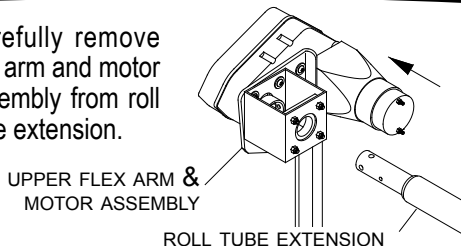
STEP 3: Remove 1/4" x 2 1/4" cap screw, washers, and nut from manual override collar. Discard hardware.



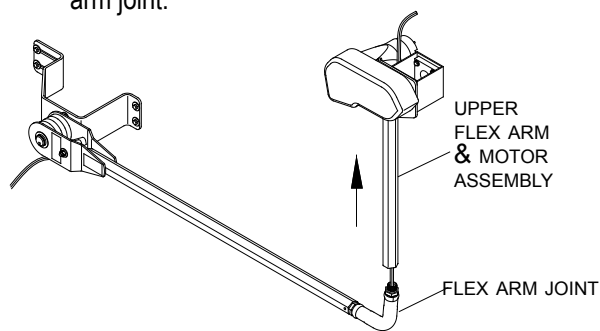
STEP 4: Remove cap screw and top lock nut from motor and roll tube extension.



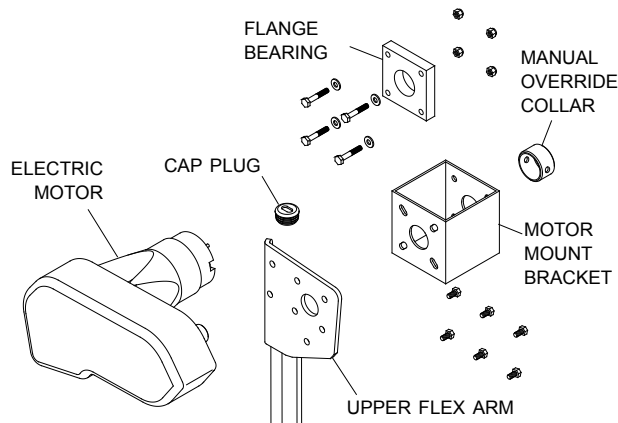
STEP 5: Carefully remove flex arm and motor assembly from roll tube extension.



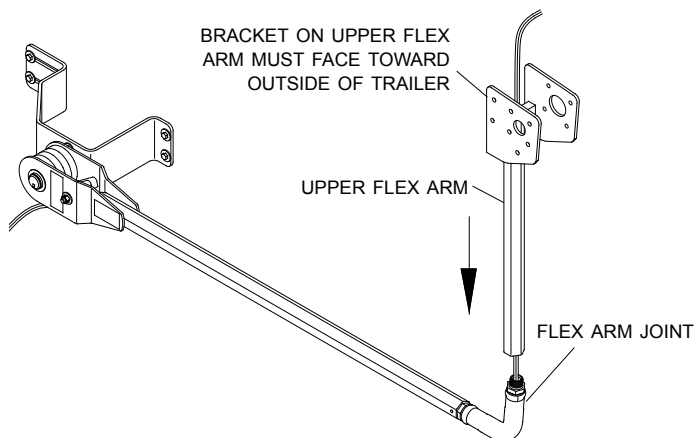
STEP 6: Remove upper flex arm and motor assembly from flex arm joint.



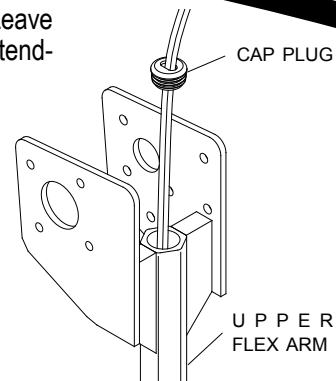
STEP 7: Disassemble electric motor and components from upper flex arm. Discard manual override collar, existing upper flex arm, and motor mount bracket.



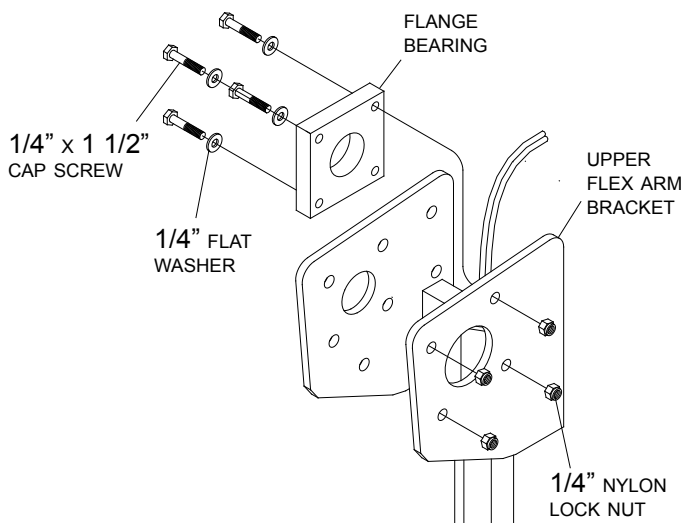
STEP 8: Insert wire through new upper flex arm, then thread upper flex arm on to flex arm joint. **Hand tighten only.**



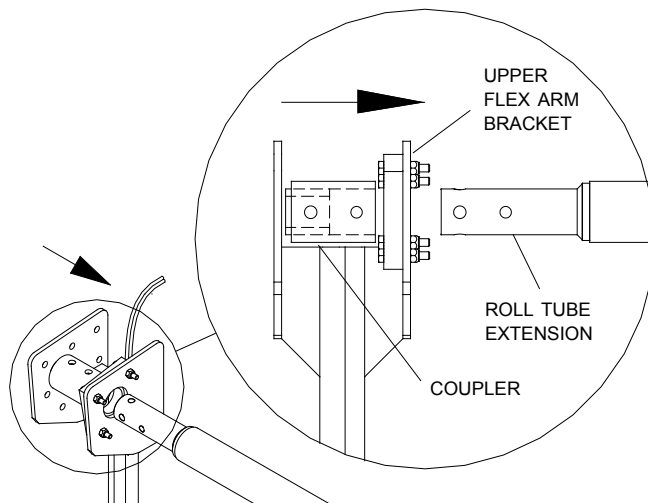
STEP 9: Install cap plug with slot on upper flex arm. Leave about 12" of wire extending out of flex arm.



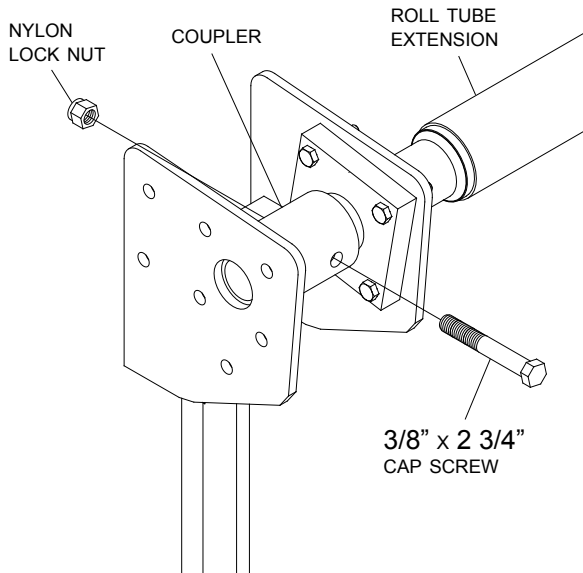
STEP 10: Mount flange bearing to upper flex arm bracket with 1/4" x 1 1/2" cap screws, washers and nuts. **Finger tighten only.**



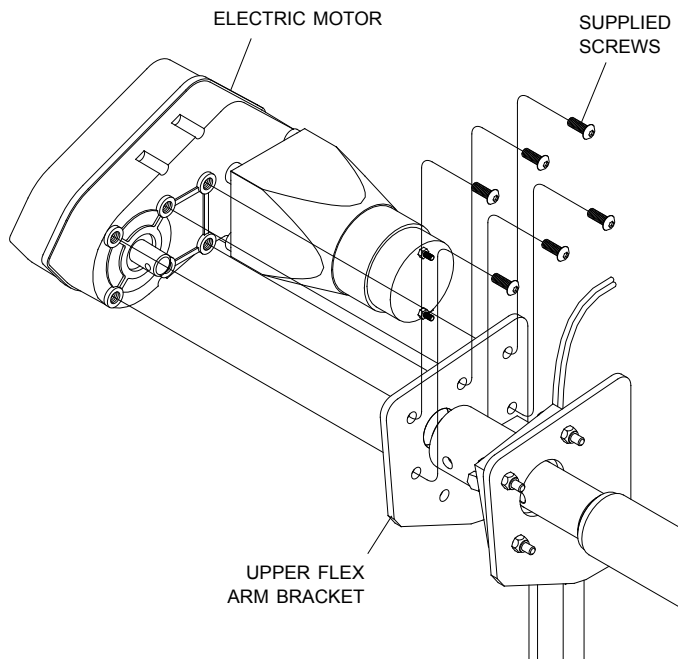
STEP 11: Hold coupler inside upper flex arm bracket as shown and slide coupler and upper flex arm bracket on to roll tube extension.



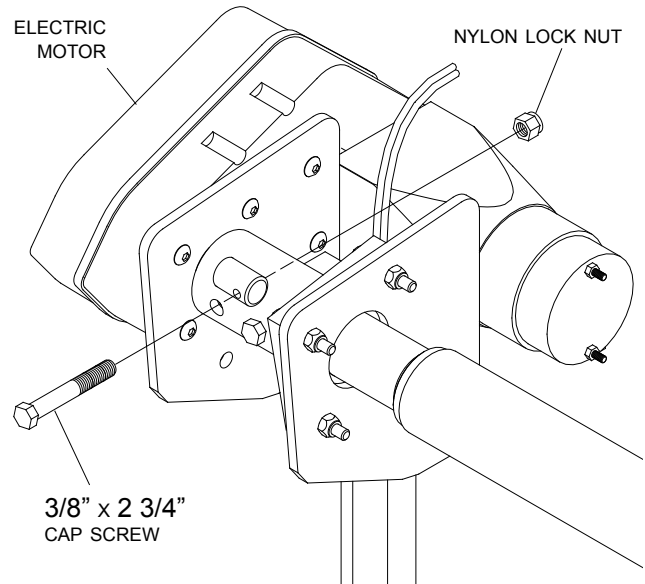
STEP 12: Fasten coupler to roll tube extension with 3/8" x 2 3/4" cap screw and nylon lock nut. **Finger tighten only.**



STEP 13: Fasten electric motor to upper flex arm bracket with supplied screws.



STEP 14: Fasten electric motor shaft to coupler with 3/8" x 2 3/4" cap screw and nylon lock nut.



STEP 15: Tighten all motor connection bolts, shaft bolts, flange bearing bolts, etc. securely.

STEP 16: Reconnect electric wires to motor.

